

MONTHLY MEMBERSHIP PROGRESS REPORT

LOCATION BRITISH COLUMBIA

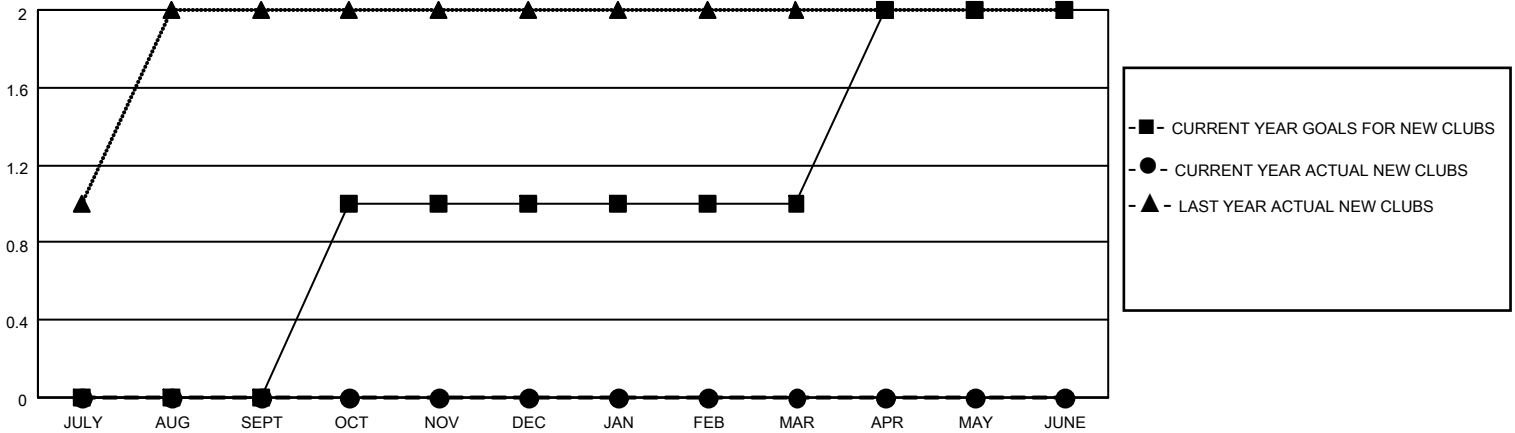
District 19 A

Results as of: 6/30/2022

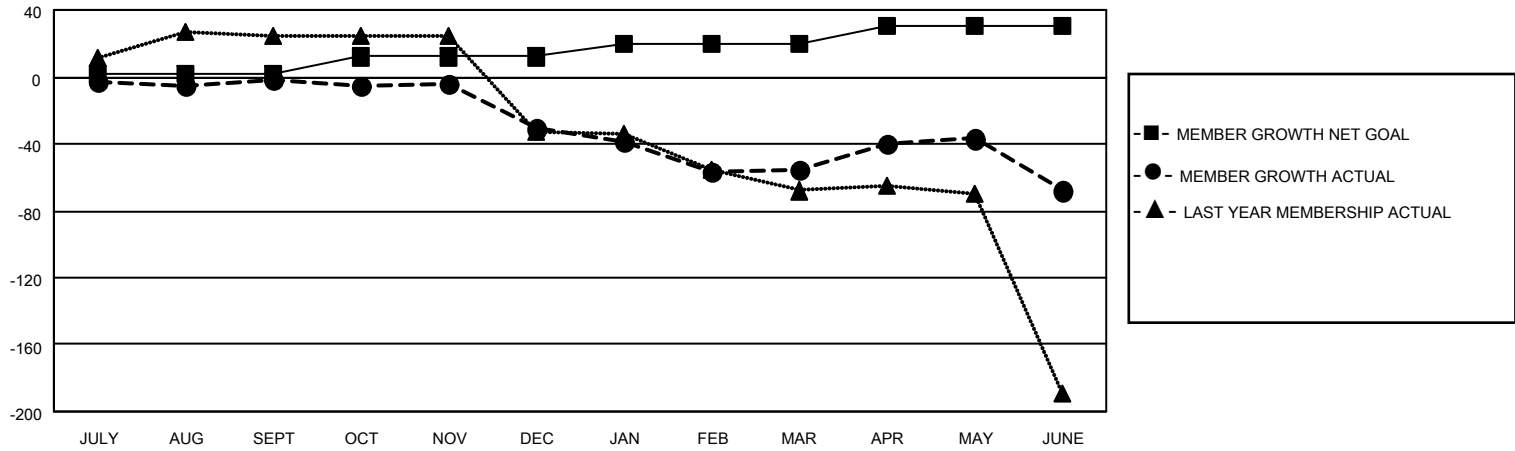
Clubs			
RESULTS FOR 2021-2022			
QUARTER	NEW CLUB GOAL	NEW CLUBS	DROPPED CLUBS
JULY/AUG/SEPT	0	0	1
OCT/NOV/DEC	1	0	1
JAN/FEB/MAR	0	0	1
APR/MAY/JUNE	1	0	1

Members			
RESULTS FOR 2021-2022			
QUARTER	MEMBER GROWTH NET GOAL	MEMBER GROWTH ACTUAL	DROPPED MEMBERS ACTUAL (including transfers)
JULY/AUG/SEPT	2	23	17
OCT/NOV/DEC	10	20	47
JAN/FEB/MAR	8	23	33
APR/MAY/JUNE	10	56	58

GOALS AND ACTUAL NEW CLUBS CUMULATIVE



GOALS AND ACTUAL MEMBERS CUMULATIVE



DROPPED CLUBS: 4

26 CLUBS OF 48 ADDED 1 OR MORE NEW MEMBERS

GENDER DISTRIBUTION

MALE	474 (52.20%)
FEMALE	434 (47.80%)
NON BINARY	0 (0.00%)
PREFER NOT TO ANSWER	0 (0.00%)

DROPPED MEMBERS

[CLICK HERE FOR CUMULATIVE MEMBERSHIP DATA](#)

DECEASED	13
CLUB CANCELLED	34
OTHER	108
TOTAL	155

TOTAL FAMILY UNIT MEMBERS	70
FAMILY MEMBERS PAYING HALF DUES	36